

GO Green
Sustainable
Smart
Growth



About Us

The Sustainability norms have become more critical than ever. Consumers are becoming increasingly aware of the negative impacts on their lifestyles, purchases, and travel habits have on the environment, and globally, all stakeholders are aligning with businesses that align with their values and processes.

Sustainable practices support ecological, human, economic health, and vitality.

Resources are finite and, therefore, should be used conservatively and wisely with a view to long-term priorities and consequences of the ways in which resources are used and deployed.

We are a team of senior professionals, helping organizations maximize their profits and efficiency while reducing their environmental footprint through research and strategy.

With a focus on Mergers and Acquisitions, we operate under the five primary verticals:

Renewable Energy

M&As of stressed assets in the Solar, Wind, Hydro, Wave, and EV sectors. Carry out energy surveys and audits and advise clients on sources of renewable energy, smart energy, smart city projects & solutions.

Infrastructure

M&As of stressed real-estate assets and providing advisory services on sustainable solutions within the norms of the environmental requirements and infrastructure sectors by analysing the available technical data. These include highways, land & buildings, water projects, pharmaceuticals & chemicals and industrial sectors.

Services

We provide Energy Storage Solutions for the Renewable Energy Sector, Telecom sector, Data Storage and Banking Sector, Military & Mission Critical Projects, and the Hospital & Hospitality sectors.

We help clients in engaging with potential investors, mergers & acquisitions, solutions & growth initiatives with innovative products and services. We also help in liaising with various government departments using our network of professionals.

Manpower

We have the ability to align diversified and intricate HR needs of our clients by providing reliable and strategic staffing solutions including L&D interventions by understanding the significance of aligning talent strategy with business strategy we tend to offer workforce solution that drive businesses forward.

Acquisition of specific portfolio projects and execution of the same as per our core objectives being mission and vision goals.

IRY SOLUTIONS strong reputation has taken us forward as a 'preferred service provider' for most of the top blue chip companies in India, the APAC, MENA and the ASEAN region, for most of the incumbent sectors with the small, medium to large players in these industry segments, for their position closure, over years.





Advisory Board



Sanjeev Anand

Advisor

Currently Sanjeev is the Group CEO of Atlas Mara-BancABC. He has been a serial CEO leading and advising institutions spanning Asia, Europe, GCC and Africa, across regional and global banking groups such as Citigroup, Actis-I&M, Banque Populaire, Development Bank of Rwanda and Euro Exim Bank. His track record has been in transformation, turnaround, start-ups, scaling and M&A. He retains a number of Directorships in banking, financial services and manufacturing sector.

He is a Life Member of the BRICS Chamber of Commerce and was its Honorary Director for Africa, working on investment and trade facilitation. He was also the Vice Chairman and acting Chairman, for two terms, for an emerging sovereign fund, guiding its formation. His experience includes financings and projects for public and private sector companies, as well as PPP working alongside local, DFIs, bilateral and multilateral partners.

He has been the member of the investment committee for Access to Finance and the Steering Committee of the East Africa Monetary Unification.

Sanjeev is a chartered accountant and an Honors graduate, with distinction, from Delhi University. He has been Chairman Banker's Association for two terms and Vice Chairman Leasing Association. He has taught certified courses in Finance, Leadership and Credit internationally.

Under his leadership Awards and Accolades include Best Country Bank from Euro Money and Global Finance for several years, Most Technologically Innovative Company by CIO 100 and Best Digital Wallet.



K. Shiva Kumar

Advisor & Director

A seasoned leader with over 33 years of experience, consistently spearheading management methods in diverse, multi-industrial environments, overseeing revenue, and managing operations across multiple international locations. With extensive work in nine countries, navigating complex business environments across diverse geographies, culminating in a contemporary global outlook. Brings valuable expertise in establishing and overseeing joint ventures, stakeholders management, and effectively managing projects on a collaborative basis. Served as a director on the following boards:

1. 100 MLD Desalination
2. Eyota Engineering, a Singapore-based company
3. Irygen Water Solutions, a subsidiary of an American technology company



Princy Joseph

Advisor

A dynamic and self-driven individual possessing 20 years of experience with a solid reputation within the Finance & Accounts domain with expertise in development and implementation of Finance business strategies, Mergers & Acquisitions. Result-oriented with broad and diversified experience across industries and consistent record of enthusiastic leadership and success in management of top-priority objectives.

She is a B.Sc. in Mathematics, CFA, PGDM(Finance), Alumna from Indian Institute of Management - Calcutta, and holds a certificate of specialization in Valuation, Mergers & Acquisitions from London Business School.

She was recognized by the Indian Achievers Forum for her excellence in Finance & Accounts, was featured as the Top 10 Women Finance Heads of 2022 by Women's Entrepreneur India and is the winner of the prestigious CFO Vision & Innovation Summit & Awards 2023.

She enjoys reading/listening to audio books and aspires to travel across the world on a backpack and live her life to its fullest potential.



Pradeep Kayal

Advisor

Extremely versatile and prominent Business Leader and Entrepreneur with 40 years of blue chip corporate and professional exposure with a CXO Leadership position and heading technology intensive manufacturing and distribution companies across India and an innovator and a pioneer in the Television assembly and manufacturing space in India, an expert in Branding, Brand Launching and Sales & marketing, distribution, consumer financing, financial advisory and a qualified trainer in Management techniques and theories and an qualified Director and Board Member in multiple companies.

He is an complete physical training enthusiast and has consistently been involved in multiple sporting activities and is highly socially and industry networked in India and abroad.



Leadership Team



Srinivas
Managing Director

The individual has successfully managed large infrastructure projects in both private and government sectors, with a total cost of \$760 million. They have managed organizations like Bridge & Roof and Air Liquide, with annual turnovers of \$200 million. With 33 years of experience in the infrastructure industry, they have managed projects worth over \$20 million. Notable achievements include managing 17 concurrent projects with a CAPEX of \$24 million per year, managing procurement of over \$200 million per year, and acting as an independent project coordinator for a reputed school.

Director on Board on IRY SOLUTIONS PVT LTD., IRYGEN WATER SOLUTIONS PVT LTD., PONNA INFRA PVT. LTD.



Shaibal "Casper" Ghosh
Executive Director & CEO

He is better known as "Casper" & is a known P&L leader and inspirator with 30 years of hands-on experience in globally diversified international markets. He has worked with Xerox Corporation, been the Country Head of the AMEA Region for Apple Technologies, Head of Sales for Usha Martin Telecom/ Hutch, a Vice President with Macmillan LLC, UK, the APAC Head for Borosil, representing Corning Solar Glass Division, President of International Operations and Head Marketing for Vikram Solar and Waaree Energies, Group CEO of Partex Group of companies in Bangladesh, COO with Navitas Solar in India and APAC CEO for Tesla Power USA in India. He was the Vice Chairman for CII for Energy at a national level and represented the sustainability team for FICCI working closely with UNFCCC.



Christopher James
Director

Currently the MD and chairman for SRI SAI SIAN INFRA AND TRADING PVT LTD handled multiple EPC solar projects within Telangana, Andhra Pradesh & Karnataka, fortunate enough to be associated and worked for amazing clients such as AZURE PWER, TATA POWER, RENEW POWER, SUNPOWER INDIA & RADITE ENERGY Etc. He is the peoples Leader, with 15 years of corporate management experience into Technical, Customer Care and BFSI carrying an overall experience of 19 years, values/follows strategic planning & management diligently in delivering client expectations with ease. Prior to bidding farewell to corporate he has worked with multiple U.S & Australian clients and has been a Transition Lead/Manager for 3 onsite (Australian) transitions achieving milestones in a very short timeframe successfully.



Arindam Basu
Director

Arindam has over 16 years of experience in fund raise, capital markets and equity research. He has previously worked at Amp Energy (Delhi), Azure Power (Delhi), Bankers without Boundaries (Delhi and London), Barclays (New York and London), and Lehman Brothers (Mumbai). Arindam is an MBA from IIM Lucknow and a has a Degree in Engineering from Delhi University. Arindam currently runs a fundraise and financial services advisory called Basic Roots Consulting focused on enabling early-stage ventures access growth capital. He has significant experience in the clean tech and sustainability across industries such as solar, wind, electric mobility, recycling, and desalination.



Principal Consultants



Navratan Katariya

Principal Consultant

EPC / Technical / Green Tech

Navratan Katariya is an electrical engineer, Masters in cleantech / energy systems from IIT Mumbai and MBA from IOU, Netherlands. In his professional journey of over 30 years, Navratan has an experience of setting up 14 new businesses for companies he worked for and 2 of his own, in the renewable energy and engineering domain. He started and led the solar business of companies like Sterling & Wilson Ltd. and Waaree Group. He also spent almost a decade in IT industry, working with California based companies like SunGard and iPass (a subsidiary of Syntegra.net).

He is now a Director, Startup engagement, Innovation and International partnerships at Centre of Excellence IoT & AI, NASSCOM, Bangalore in areas of deeptech used in Agritech, Cleantech, Healthcare, Mobility/transport, Industry Automation, Smart Cities etc.



Kim Collaco

Principal Consultant

Strategy and Sustainability

An MBA with 16 years' experience across strategy, business transformation, business development, marketing, and cross border business including development of new markets in India, UK, Europe, Asia, Oceania and the US. Experience in India inbound set ups and joint ventures and technology commercialisation.

Successfully built and executed Go-to-market and market expansion strategies across technology, aerospace, financial services, professional services and smart energy. Kim holds an MBA in Strategy from the University of Cambridge and is currently located in Lyon France where she is involved in various projects around sustainability, renewable energy, batteries, cross border trade etc.



Manish Jeloka

Senior Principal Consultant

Investments and Investor Relationships

Manish Jeloka is a renowned figure in the Banking, Financial Services, and Insurance (BFSI) sector with over 31 years of experience. He has managed business units, identified market opportunities, and driven growth across various domains. He has held positions in senior and country management committees of major institutions like Citibank, American Express Bank, Sanctum Wealth, and Standard Chartered Bank in India and South Asia. Manish is a thought leader, focusing on regulatory compliance, risk management, and establishing a strong culture of conduct and governance. He also collaborates with start-ups, guiding and mentoring them, and is dedicated to digitalizing the finance vertical. Manish also coaches students at the Indian Institute of Management Ahmedabad.



Saikat Ganguly

Senior Principal Consultant

Fund Management and Treasury Advisory

Over 22 years of experience in sales and business development in equity, commodity, and currency markets, life/general insurance, retail assets, and financial product distribution. An MBA and AMP from Indian School of Business, Mr. Ganguly has worked with organizations like BMA Wealth Creators, Reliance Money, IL&FS, and Tata TD Waterhouse Ltd. He has also served as the CEO of Diamond Star Consulting JSC, Vietnam, the leading distributor of Personal Loans, Credit Cards, and insurance products in Vietnam. He has expertise in retail distribution, handling institutional and corporate sales, developing large scale point of sale networks, managing sales and business development, distribution channel, operations, and customer service. He has expertise in budgeting for annual sales, gross profit, cost, manpower, and POS expansion. Mr. Ganguly is also involved with India's leading football club East Bengal as its Football Secretary and Director.



Pankaj A Jain

Principal Consultant

Investor Relations & Engagement

A gold medallist from Indian Institute of Foreign Trade (IIFT, India) in international business and MBA in Marketing Pankaj is an energetic and proficient business enabler with 16 years of industry experience in offering investments and structuring solutions to Indian and global client base. Pankaj is an avid believer of "Karma"- As you sow, so shall you reap.

Pankaj has experience in advising individuals, families, businesses and institution on Investment and structuring. He is currently involved with Prometheus Global – Global Investment solution provider, and ProGrowth Ventures- Mid Market growth funding for Start-ups.



Raj Sekhar

Principal Consultant

Learning & Development

Raj Sekhar heads Global Leadership Partners, an organization focused on releasing potential and creating Leaders. Prior to this Raj was a General Manager with IBM. Before moving into the Global job, Raj headed Professional Development in Asia Pacific for IBM. Raj has also worked in the ASEAN Region and in India with IBM. For three years he was responsible for Leadership Development in the 6 ASEAN countries of IBM. In IBM India, Raj has held leadership positions in Business Transformation, Customer Satisfaction, General Services, Procurement, and Learning.

During his tenure in IBM India, he was a member of the 7 member executive team that governed IBM India.



Ravi Kumar Murarka

Senior Principal Consultant

Audits, Finance Compliance Management

Ravi Kumar Murarka, a Chartered Accountant, Company Secretary, and Cost Accountant with over 26 years of experience in finance, has held leadership roles in various industries such as Engineering, Steel, Cement, Plywood, and Telecom.

His expertise lies in strategic financial management, financial analysis, and regulatory compliance. Murarka's key areas of expertise include business planning, financial analysis and reporting, and corporate governance and compliance. His key attributes include visionary leadership, effective communication, a result-oriented approach, and continuous learning. Murarka is committed to driving organizational growth, financial stability, and stakeholder value, and is eager to discuss how he can contribute to your organization's success.



Somik Banerjee

Principal Consultant

Branding & Marketing

A passionate marketer and a marketing communication professional with over 2 decades of experience in brand & experiential marketing tailor-made for both urban and upcountry markets using ATL, BTL and Digital mediums. He has been associated with some of the leading brand marketing and advertising agencies in the past along with a brief stint in TV production.

In the past he has successfully led the zonal marketing for Mahindra & Mahindra (Automotive) for the East zone. In his previous stint, he was heading the marketing communication department at Tesla Power USA for the AsiaPacific region.



Lt. Sandhya Suri

Principal Consultant

People Management

She is a Change Enabler, 3x TEDx inspirational Speaker, Navy Veteran with 28 years of crossfunctional experience specialising in Leadership and Behavioural Sciences, Performance Profiling, Talent Acquisition, Mapping and Scouting Human Resources Strategy in the domain of Change Management.

Recipient of several awards including the Winner of Digital Global Public Speaking Championship by MS Talks, and Inspiring Women of the Year Award by ASSOCHAM for her contribution for women empowerment.



Carlo Doniselli
Partner- Europe
Business & Operations

An entrepreneur with extensive experience in management consulting, strategic marketing and supply chain management.

He has over 25 years of experience as a manager with the major consulting firms (the Big Four), where he developed strategic and management consulting projects for important multinational corporations.

He has been involved in numerous collaborations with manufacturing companies in the photovoltaic industry, developing sales and marketing strategies for the domestic and international markets.



Md Tareq Aziz
Partner - Canada
Business & Operations

Md Tareq Aziz, born in 1970 in Bangladesh, is a renowned marketing professional with an MBA major in Marketing. He has a successful career in brand management and marketing communications, managing marketing activities for MNC and local brands. His skills include strategic planning, demand planning, sales forecasting, promotional plans, digital and social media activities, SEO, SEM, Google Analytics, event management, market research, and stakeholder negotiation. Tareq has held key positions such as Executive Director at Building Technology & Ideas Ltd. and Head of Marketing at Partex Star Group, TVS Auto Bangladesh, and Basundhara Group. He is an active member of professional organizations.



Ashok Gidwani
Partner - North America
Business & Operations

Mr. Ashok Gidwani is a Mechanical engineer from IIT Kharagpur, 1965. He has worked with Bechtel India Ltd (1965-1967) after which he settled in Pittsburgh, USA. He has done his MBA from University of Pittsburgh, 1969.

He established FABCON which produced metal processing products for steel and aluminium industries. He has also worked as manufacturer's representative for HVAC products that reduced electrical and natural gas usage over traditional products.



Gopal Jhunjunwala
Geography Head - East

He is an avid finance enthusiast with experience across financial consulting, insurance advisory & the white goods industry. He's been assisting clients in raising funds through different channels & across geographies. With total work experience of over 45 years, he's the man of wisdom in the group with a panache for networking & client relationships. In his long career he has been associated with diverse organisations like Salora, Noppo Group, Duro Plywood, Minwool Rock Fibres, Andhra Polymers & the Jiwarkja Group.



Sandeep Rawat
Geography Head - South

Sandeep Rawat, a 26-year-old technology professional with a science degree from Hans Raj College Delhi University and a Masters in Business Management and Industrial Relations from the University of Delhi. He is an outstanding people's manager with a blend of enthusiasm and dynamism. With experience in IBM certified sales and Wipro certified service, he has deep knowledge in developing large technology projects and is skilled in stitching winnable large bids with qualified consortiums and technology partners. Rawat has played a vital role in India's Smart City initiatives and has launched various office automation, telecom, and software products in India and Southeast Asia markets. His dream is to develop professional teams for the next generation.



Verticals Of Operations

Organizational focus is on Mergers and Acquisitions, operating under five primary verticals

RENEWABLE ENERGY

Solar
Green Hydrogen
Wind
Hydro / Tidal
Smart & Sustainable Solutions (PaaS / EaaS)
Smart city projects & solutions (Turnkey)

INFRASTRUCTURE

Energy storage solutions & green power projects
Water Projects
Land & Buildings
Pharmaceuticals and Chemicals

SERVICES

Investor Relations and Engagement
M&A advisory and Execution
Solutions and Growth initiatives with Innovative Products and Services
Government liaison & Public Relations

MANPOWER

Sourcing and Execution
L&D
Education, Courseware Development and Execution

OTHERS

Special Portfolio Project Acquisition and Execution

Special Projects

Energy Storage Solutions (OPEX)

Energy Storage Solutions

A unique solution in power to address the Energy Efficiency Gap & its open possibilities for the future growth. It is a business model whereby customers pay for an energy service without having to make any upfront capital investment.

The Energy Storage Solution model usually takes the form of a subscription for battery and battery storage solutions owned by a service company or management of energy usage to deliver the desired energy service.



Community Projects

Community Water Purification Solutions

The initial treatment process consists of filtration or sedimentation to remove particulate matter from the untreated water. Then, a disinfection process is conducted (usually chlorination) to kill any remaining bacterial and viral pathogens from the filtrated water.

Community Power Solution (Off Grid)

Community power is the belief that people should have a say over the places in which they live and the services they use. It is a growing movement – with communities across the country, and the world, working together to improve places, public services and each other's lives.



Sun Dryers and Phase Change Material (PCM)

Phase Change Material for Solar Energy Usages and Storage

Solar energy is a renewable energy source that can be utilized for different applications in today's world. The effective use of solar energy requires a storage medium that can facilitate the storage of excess energy, and then supply this stored energy when it is needed. An effective method of storing thermal energy from solar is through the use of phase change materials (PCMs). PCMs are isothermal in nature, and thus offer higher density energy storage and the ability to operate in a variable range of temperature conditions.

Social awareness, along with the technological development of solar stills can significantly motivate people to use PCM-based energy storage systems.



E-Commerce, Insights & Data Services

More than **15+ Clients**

Advisory Services	Cloud Migrations (App & Data)	Analytics	Emerging Technologies	ERP Implementations	Alliances
<ul style="list-style-type: none"> ■ Architecture & Advisory Services ■ Implementation Roadmaps / Digital Transformation Journey ■ Information Governance ■ Accelerators 	<ul style="list-style-type: none"> ■ Lift & Shift Migrations ■ Re-Host Migrations ■ Re-Engineering ■ New Enterprise Data Lake Foundations ■ Data Warehouse Applications ■ Big Data Platforms 	<ul style="list-style-type: none"> ■ Descriptive Reporting ■ Real Time Analytics (Events & Time Series) & Reporting ■ Hyper-Personalization ■ Visualization Libraries ■ Advanced Analytics / AI Use cases 	<ul style="list-style-type: none"> ■ Industry process Automation (Industry 4.0) ■ Innovations in BlockChain ■ Create EcoSystems with IoT ■ BPM ■ AR/VR/MR ■ Conversational AI / BOTS 	<ul style="list-style-type: none"> • ERP Module Implementations with SAP • ERP Module Implementations with Oracle Fusion • ERP Implementations with Microsoft Dynamics 365 	<ul style="list-style-type: none"> ■ Alliances with eCommerce Application Vendors ■ Alliance with BPM Company (Business process Management) ■ Alliance with Microsoft Technologies ■ Alliance with AWS (in progress)

DEVOPS & AGILE Methodology

RETAIL

CPG

LOGISTICS

CONSTRUCTION

MANUFACTURING

Technology Offerings



- Manufacturing
- Payroll
- Production
- HR
- Financials
- Planning
- Distribution
- CRM
- Analytics

Spectrum of Digital Services

Create a Digital Ecosystem with IoT Things, an inter-connected world that would interact in Real-Time & share data & Information to transform Day-Day operations

Bringing Transformation in construction, Logistics & Supply chain and has improved the Operations by 35%-50%. Blockchain has introduced Transparency & Accountability in Transactions. It will bring Acceleration & Security in the Post Covid-19 era

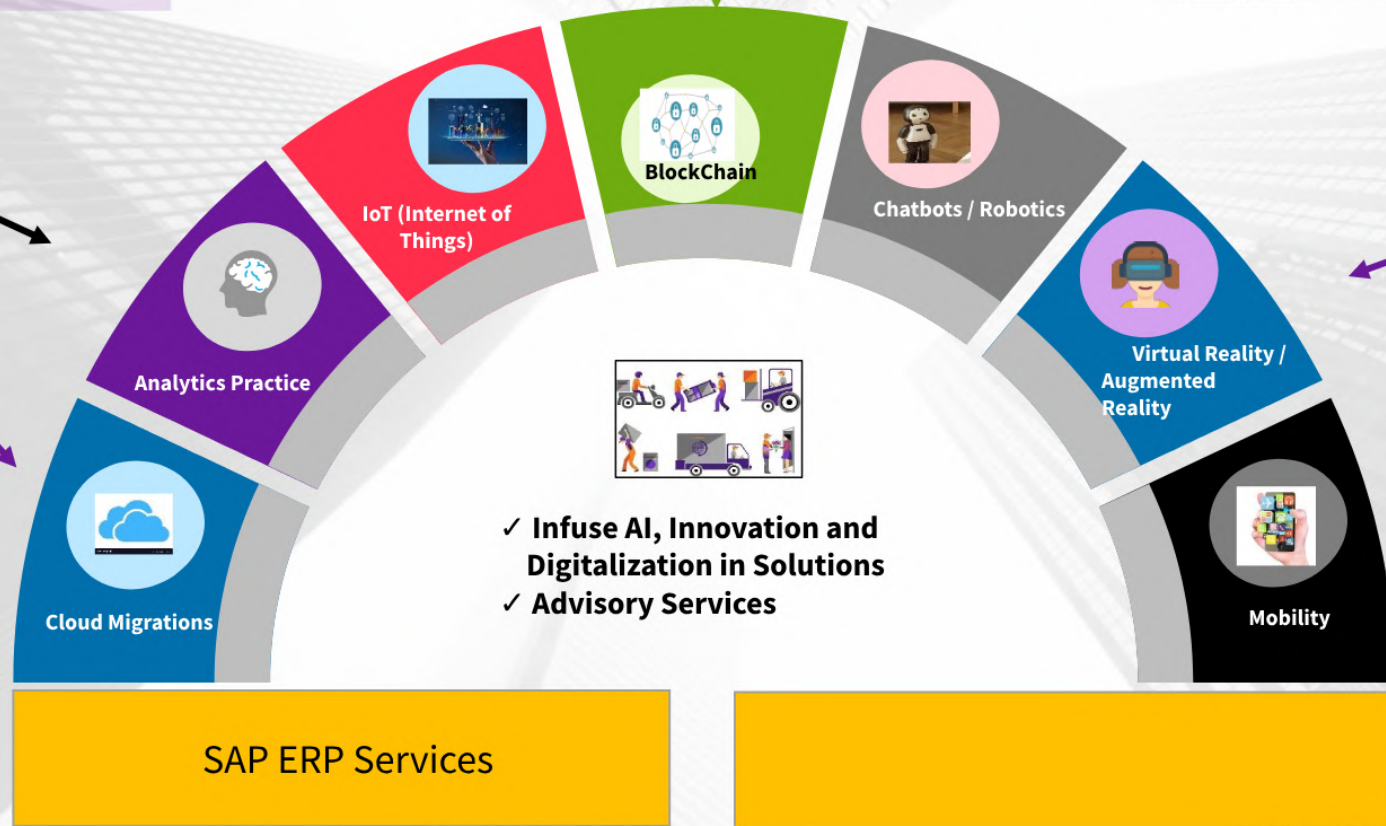
chatbots offer a Conversational User Interface solutions for your supply chain and logistics operations. Right from placing orders to processing payments and tracking orders, these bots can take up all high volume tasks

DWH, Visualizations & AI/ML is the new norm for the solutions that are going to be build for Data Driven Organizations.

Cloudification Services includes Platform Migration with Lift & Shift, Rebuild/Reengineer, Reboot, Replatform. Advisory Services can be leveraged for right tool

Understand the importance & how AR/VR will enhance the Service Industry, Manufacturing Industry, Tourism that would enhance the productivity

Mobility has been a Strengthening force in the Organizations, bringing Ease of Use and Access Anywhere & Everywhere Mantra



SAP ERP Services



Our Clientele



Our Mission, Vision & Objectives

Cognitive

Left and Right Brain

Traditionally, consulting is a left-brain activity. It has a strong fact-based focus aimed at solving problems in a scientific way. The right part of the brain, **associated with creativity, intuition, empathy, etc.** is largely ignored. WPC corrects this limitation.

Emotional

Head and Heart

So far, consulting is often primarily a head-only activity with consultants as cold "talking heads" that only provide clinical advice. **But people have a heart too. Not** using that in consulting in today's challenging environment is a waste of potential.

What is Whole - Person Consulting?

5 Futures And Their Benefit

Ethical

Value and Values-Based

Consulting in the past could be instrumental and neutral focusing on what the client asked for. WPCs don't do that. They bring in their value and judgements in the Consulting process as well. **Not to enforce their views, but to help clients think about their own.**

Physical

Mind and Body

The classical consultant is not supposed to get their hands dirty. They give advice, but stay away from execution, however consultants also have a body while the amount of physical work is limited. **WPCs don't say away from doing real work.**

Social

Relational and involved

Old style Consulting is detached. **WPCs is deeply human centered.** you work with your clients not for them you'll bring in everyone's perspective and engage in a true conversation, thereby creating personal relationships.

Good consultants bring in their whole selves. They don't play the role of a consultant, or restrict themselves to what is expected. They embrace being a Whole-Person Consultant.

We've seen them: consultants that work according to the book, do what they are supposed to do, often even quite effectively. But, something is missing. They are hard to relate to, wear a mental suit, or don't say what they really think.

I aim to be the exact opposite. When I work with a client, they deserve "all of me"—to use John Legend's words. This means not just my consulting skills or intelligence, but also my creativity, personality, and vulnerabilities.

This is what Whole-Person Consulting (WPC) means:

COGNITIVE: LEFT and RIGHT BRAIN:

Traditionally, consulting is a left-brain activity. It has a strong fact-based, cognitive-analytical focus aimed at deconstructing and solving problems in a scientific way. The right part of the brain, associated with creativity, intuition, holistic thinking, empathy and self-awareness is largely ignored. WPC corrects this limitation.

EMOTIONAL: HEAD and HEART:

So far, consulting is often primarily a head-only activity. The image is that of consultants as cold "talking heads" that switch off their emotions and provide clinical advice. But next to a head, people have a heart too. Not using that in consulting in today's challenging environment is a waste of potential.



PHYSICAL: MIND and BODY:

The classical consultant is not supposed to get their hands dirty. They give advice, but stay away from execution. However, consultants also have a body. While the amount of physical work is of course limited, WPCs don't shy away from doing real work for the client, like helping with implementation.

SOCIAL: RELATIONAL and INVOLVED:

Old-style consulting is detached. WPC is deeply human-centered. You work with your clients, not for them. And not just with the top; you'll bring in everyone's perspective and engage in a true conversation, thereby creating personal relationships even if they just last weeks or months.

ETHICAL: VALUE and VALUES-BASED:

Consulting in the past could be instrumental and neutral, focusing on what the client asked for. WPCs don't do that. They bring in their values and judgments in the consulting process as well. Not to enforce their views on clients, but to help them think about and challenge their views.

In short, as a Whole--Person Consultant, you bring in your full cognitive, emotional, physical, social and ethical self to the table when you work with a client. You use your "all of me" instead of merely the left side of your brain.



2050—theFuture!

Wind, water, geothermal and solar power can meet the worldwide demand for 11.804 TW of energy while avoiding the predicted global temperature increase of 2.7 degrees Fahrenheit (1.5 degrees Celsius) above preindustrial levels by 2050.

The researchers outline how doing so would save the lives of 4 million to 7 million people who might have otherwise died from diseases caused by air pollution, save countries more than \$20 trillion overall in health and climate costs, and produce a net increase of more than 24 million long-term jobs.



Planet Texas 2050 is a research grand challenge at The University of Texas at Austin. We're a team of more than 150 researchers across all disciplines working together over the next decade to find ways to make our state more resilient in the face of extreme weather events and rapid population growth.

Thank You



Corporate Office (HQ) - India:

IRY Solutions, Awfis Space Solutions,
Ground Floor, DSL Abacus IT Park, Survey
Colony, Industrial Development Area,
Uppal, Secunderabad, Telangana - 500039.

Europe:

Z.I. Loc. Passovechio
Via A. Avogadro, 17
88900 - Crotone (KR), Italy

United Arab Emirates:

Bellevue Towers 1, Burj Khalifa
Boulevard, PO Box - 336851, Dubai, UAE.

Canada:

58 Monastery Ln, Scarborough,
ON M1L 4V6, Toronto

North America:

817 Merchant St,
Ambridge, PA - 15003, USA

+91 - 90002 72741

✉ info@irysolutions.com

🌐 www.irysolutions.com

